

M-44 'Ultimo'
The designer instrument



The new Hammond spinet M-44 'Ultimo'

The Designer instrument



Although Hammond looked at the legendary M-100 as a source of inspiration for the new M-44, this new spinet is much more than just a contemporary replica.

The basic philosophy was to design a “timeless” instrument with the best Hammond sound available. Therefore the M-44 has 96 independently controllable digital tonewheels that reproduce the sound of the Hammond B-3 tonewheel-generator flawlessly... as a consequence the M-44 has all-note polyphony.

You operate this new Hammond just in the same manner as you would the old tonewheel instruments, that is you choose presets by selecting the reverse-color keys on the keyboard and select the vibrato by means of the famous “vibrato-dial” button. The keyboard of the M-44 has the famous water-fall keys that can be found on the B-3, C-3, A-100 etc... The size of the keyboard (2x 5 octaves) allows you full musical freedom, whereas the external dimensions of the cabinet were kept compact by utilizing a 13-note pedalboard in a functional cabinet.

Unique about this new Hammond spinet instrument is the tube-preamplifier which is so important for both the warm and overdrive-sound if so desired. On top of that the M-44 also has a DSP-generator that is responsible for the famous “scanner-vibrato” effect.

The 2-rotor Leslie simulation can be selected and tuned by menu, you can even make a choice out of different virtual Leslies that mimic models such as 122, 147, 820, etc... and of course the M-44 has an 11-pin terminal to accommodate a real Leslie.

The M-44 has no built-in rhythms or arranger, but allows you to hook up any arranger by MIDI so that your instrument remains truly timeless... as musical styles and fashions change, you simply exchange the external arranger and hold on to your valuable Hammond...

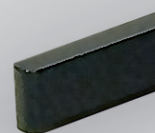
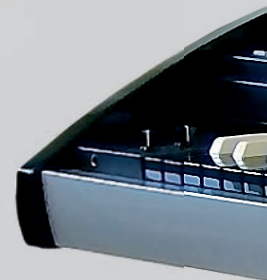
Last but not least the M-44 has a contemporary design that resembles the unchallenged Hammond B-3 ‘Ultimo’. The same black and silver high-polish lacquers were used to accentuate the shape of this beautiful contemporary instrument.

This new instrument does what has never been done before :

“offering you the classic ‘tone-wheel’ sound by utilizing 96-DIGITAL TONE WHEELS!”

The Vase III sound generator now makes it possible to reproduce all of the characteristics of the vintage Hammond B-3. Additionally, the Hammond M-44 Spinet houses two INTERNAL VACUUM TUBES that will change continuously from PRE-AMP MODE to OVERDRIVE MODE via control knob.

The new Hammond M-44 also includes 12 REVERSE COLOUR KEY PRESETS for



Model A100 1969 on the M100-series; the source of inspiration for the M-44



Upper & Lower Manual, 3 SETS OF DRAWBARS, a 2-rotor DIGITAL *Leslie*, and a 6 position ROTARY VIBRATO/CHORUS KNOB, all the features you would expect to find on a Hammond B-3.

The M-44 will perform like no previous tone-wheel Hammond could ever do, with features like PITCH BEND/MODULATION, TRANSPOSE and MIDI.

A library of 132 PROGRAMMABLE PATCHES allows you to save and store your own Drawbar combinations, MIDI information, whatever you like. ■

Specifications

M-44 'Ultimo'

SUZUKI reserves the right to change prices, specifications, designs, and models, and to discontinue products without notice and without liability. Due to photographic and printing limitations, the illustrations shown here may differ from the actual color.

**SUZUKI MUSICAL INST.
MFG. CO., LTD
Hamamatsu, Japan**

Keyboards	Upper 61 Water-fall keys with velocity +12 Preset keys Lower 61 Water-fall keys with velocity +12 Preset keys Pedal 13 keys
Drawbars	3 sets of Drawbars, 9-Upper, 9-Lower, 2-Pedal
Sound generator	Vase III sound generator creates 96 digital Tone-wheels™. Tone-wheel™ leakage-noise and motor-noise are adjustable wheel by wheel.
Presets	Original B-3 reverse-colour preset-keys 2x11 Presets x 12 Banks + Cancel
Polyphony	Full polyphony (unlimited)
Leslie®	Next generation digital Leslie® and scanner vibrato
Preamp & Overdrive	Real dual tube amp for pre-amplification and Leslie® overdrive
Reverb	8-Modes
Tone control	Bass, Mid range, Treble
Sustain	Pedal Drawbars
Wheel	Pitch Bend, Modulation
Panel controls	
Leslie®:	Slow/fast, on/off, break/thru, effect, send/return
Vibrato/Chorus:	ON, V1, V2, V3, C1, C2, C3 with 6 position rotary knob
Percussion:	Second, Third, Decay Fast, Soft
Control:	Manual bass, split
Effect:	Tube amp, reverb on
Demo:	Demo button: user assignable function
Display switch:	Page up/down, parameter value +/-, rotary- encoder, Menu/exit, Play, Rec, Bank
Volume control:	Master volume, Tone control, Tube overdrive
Display	20-Character, 2-Line back-light LCD
Terminal	Line in volume, Line out L/R, 11-Pin Leslie®, Midi, IN/OUT/THRU Headphone.
Card slot	Compact Flash™ Card slot
Pedals	Expression-pedal with assignable foot-switch Damper
Ampl. out	2x 50Watt
Speakers	2x 30cm Woofer, 2x 10cm Tweeter
Power	Consumption 220Watt, 230V(CE)/240V(BS)
Dimensions	With music-rest 119cm (W) x 63cm (D) x 115cm (H) Without music-rest 119cm (W) x 63cm (D) x 92cm (H)



Hammond Suzuki Europe B.V.

Ir. D.S. Tuynmanweg 4A

4131 PN Vianen

The Netherlands

Tel.: 0031-347-370594

Fax: 0031-347-370621

E-mail: info@hammondsuzuki.com

Website: www.hammondsuzuki.com